

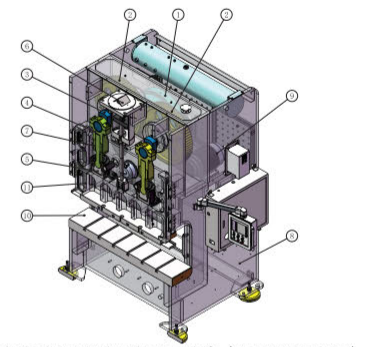


- SAFETY
- STABLE
- PRECISION
- ENERGY SAVING
- AUTOMATION

80-315TONS

Performance Features

STC series press is two points gap frame press, double crank unitized frame with long bed area, great for light duty progressive die application or large single stroke parts. STC series presses are produce by Qiaosen presses, which built to meet or exceed JIS Class 1 accuracy standards. Qiaosen adopt high strength steel frames and Quenching & Grinding Process for Slide-Guide, which can make the press machine have minimizing deflection and high accuracy and provide increased tool life. Forged 42CrMo alloy material crankshaft, precision-machined gears and other drive train components are designed for smooth power transmission, quiet operation and long life. ST series presses are dry clutch system, It has longer service life of the clutch system, high single stroke rate and high torque outputs performance. Siemens based control platform and user-friendly touch screen operation interface are standardized in all QIAOSEN's presses, it provides ease of operation and expandable capabilities. Easy to integration with other automation system. Other brands of control can be furnished upon request.



- ① Flywheel, Dry Clutch Brake, Gear Shaft (Transmission System)
- ② Main gear ③ Crankshaft ④ Connecting Rods
- ⑤ Hydraulic Overload Protection
- ⑥ Balancer ⑦ Adjusting nut ⑧ Frame
- ⑨ Main Motor ⑩ Bolster ⑪ Slide Frame

- ◆ Heavy one-piece steel frame, minimizing deflection, high accuracy.
- ◆ OMPI pneumatic dry clutch brake, longer service life.
- ◆ 6 points slide guiding, Adopt Quenching & Grinding Process for Slide-Guide, which can make the press machine higher accuracy & low wear and provide increased tool life.
- ◆ Forged 42CrMo alloy material crankshaft, its strength is 1.3 times higher than that of #45 steel, and service life is longer.
- ◆ Copper sleeve is made of tin phosphorus bronze ZQSn10-1, which has a strength 1.5 times higher than that of ordinary BC6 brass.
- ◆ Highly sensitive hydraulic overload protection device, effectively protect the service life of the presses and tools.
- ◆ Built to JIS Class I accuracy standard.
- ◆ Optional Die Cushion.

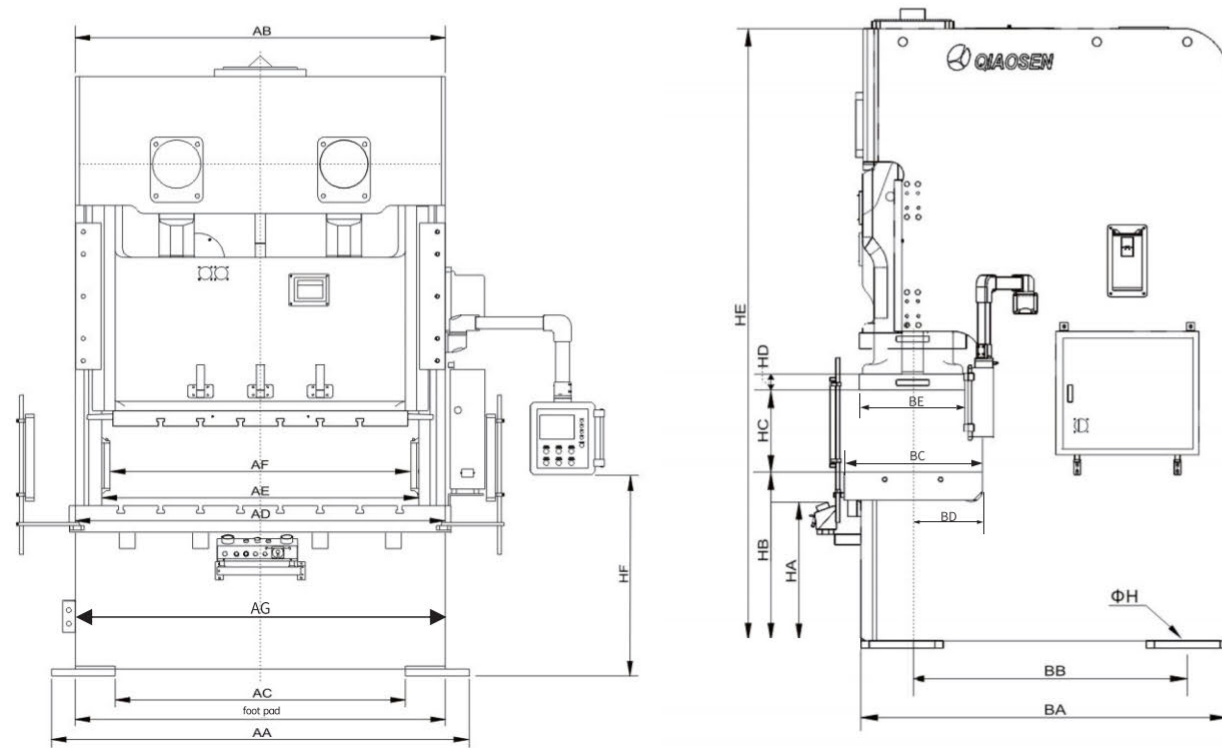


Technical Parameters

Name	Unit	STC-110		STC-160		STC-200		STC-250		STC-315	
		V-type	H-type	V-type	H-type	V-type	H-type	V-type	H-type	V-type	H-type
Mode											
Press capacity	Ton	110		160		200		250		315	
Rated tonnage point	mm	5	3	6	3	6	3	7	3.5	7	3.5
Slide strokes per minute	S.P.M	35~65	50~100	30~55	40~85	25~45	35~70	20~35	30~60	20~35	30~60
Slide stroke length	mm	180	110	200	130	250	150	280	170	280	170
Max die height	mm	400	435	450	485	500	550	550	605	550	605
Slide adjustment amount	mm	100		100		120		120		120	
Slide Area	mm	1400*500		1600*550		1850*650		2100*700		2200*700	
Slide Thickness	mm	70		70		95		95		95	
Bolster Area	mm	1800*650		2000*760		2400*840		2700*900		2800*900	
Bolster Thickness	mm	130		150		170		170		190	
Platform to floor distance	mm	830		990		1070		1100		1100	
Die cushion capacity	Ton	3.6*2set		6.3*2set		10*2set		14*2set		14*2set	
Main motor power	KW*P	11*4		15*4		18.5*4		22*4		30*4	
Air pressure	kg*cm ²	6		6		6		6		6	
Press accuracy grade	Grade	JIS 1		JIS 1		JIS 1		JIS 1		JIS 1	
Press dimension(L*W*H)	mm	1745*2000*3059		1940*2200*3709		2235*2620*3849		2545*3000*4304		2545*3100*4304	
Press weight	Tons	14.2		22		30.5		40.5		48	
Die cushion active area	mm ²	350*235*2set		410*260*2set		540*350*2set		640*470*2set		690*470*2set	

Our company is ready to carry out research and improvement work at any time. Therefore, the size design characteristics specified in this catalogue can be changed without further notice.

Overall Dimensions



Specification	STC-80		STC-110		STC-160		STC-200		STC-250	
Mode	V	H	V	H	V	H	V	H	V	H
AA	1660		2000		2200		2620		3000	
AB	1540		1900		2080		2460		2800	
AC	1080		1360		1520		1820		2200	
AD	1500		1800		2000		2400		2700	
AE	1200		1510		1660		1990		2220	
AF	1100		1400		1600		1850		2100	
AG	1440		1780		1980		2320		2590	
BA	1440		1745		1940		2235		2545	
BB	1070		1295		1380		1885		2195	
BC	550		650		760		840		900	
BD	280		330		385		425		455	
BE	450		500		550		650		700	
HA	(630)		(630)		(730)		(790)		(820)	
HB	775		830	865	990	1025	1070	1120	1100	1155
HC	350	380	400	435	450	485	500	550	550	605
HD	150	90	180	110	200	130	250	150	280	170
HE	2670		3059		3709		3849		4304	
HF	1330		1240		1440		1570		1680	
Φh	Φ28		Φ35		Φ35		Φ54		Φ54	

Standard Configuration

- > QS operating system
- > Hydraulic overload protection device
- > Electronic cam device
- > Electric slider adjusting device
- > Variable frequency variable speed motor (Adjustable Speed)
- > Air blowing device
- > Digital die height indicator
- > Slider and stamping tools balance device
- > Rotating cam controller
- > Crankshaft angle indicator
- > Electromagnetic counter
- > Air source connector

- > Second degree falling protecting device
- > Air blowing device
- > Mechanical shockproof feet
- > Mis-feeding detection device reserved interface
- > Maintenance tools and toolbox
- > Main motor reversing device
- > Light Curtain (Safety Guarding)
- > Power outlet
- > Electric grease lubrication device
- > Touch screen (pre-break, pre-load)
- > Fixed two-handed operating console
- > LED die lighting

Optional Configuration

- > Customization Per Customer Requirement
- > Die Cushion
- > Foot switch
- > Quick Die Change System
- > Slide knock out device
- > Turnkey System with Coil Feedline and Automation System

- > T-type movable two handed console
- > Re-Circulating Oil Lubrication
- > Wet clutch
- > Anti-Vibration Isolator
- > Tonnage Monitor

Capacity Graph

